



**RILEY &
MCCORMICK**
WESTERN WEAR

WESTERN WEAR CATALOG



**RILEY &
MCCORMICK**
WESTERN WEAR

WESTERN WEAR CATALOG

ORDER DEADLINE:

The seasonal line is available to order from Aug 1 to Oct 31, 2024

DELIVERY DATE:

May 30th, 2025

AVAILABLE SIZES:

All of our shirts are available in matching men's and women's styles

Men's Sizes: S to 5XL Tall: LT to 5XLT

Women's Sizes: XS to 3XL

MINIMUM ORDER:

48 shirts per style





MEN'S STYLE

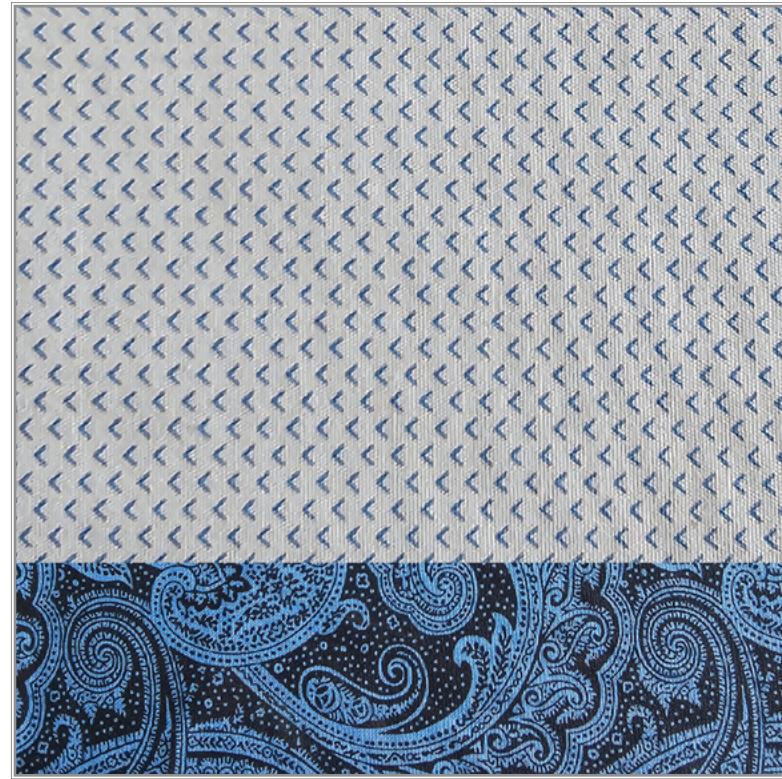
STYLE: MPL-22-06

FABRIC: 100% COTTON

DESCRIPTION: Light blue print with contrasting fabric inside collar, placket and cuff, pearl snap and two western pockets.

MEN'S SIZES: S - 5XL TALL: LT - 5XLT

WOMEN'S SIZES: XS-3X



WOMEN'S STYLE



SIDE VIEW



BACK VIEW



STYLE: FM-SC-38

FABRIC: 100% Cotton

DESCRIPTION: Black paisley with contrasting fabric inside collar, placket and cuff, black piping, pearl snap and two western pockets.

MEN'S SIZES: S - 5XL TALL: LT - 5XLT

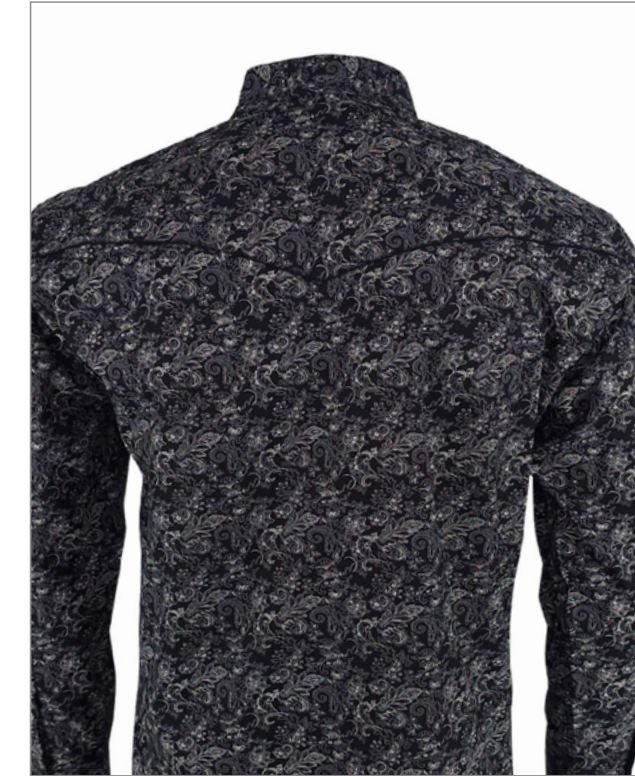
WOMEN'S SIZES: XS - 3XL



WOMEN'S STYLE



SIDE VIEW



BACK VIEW



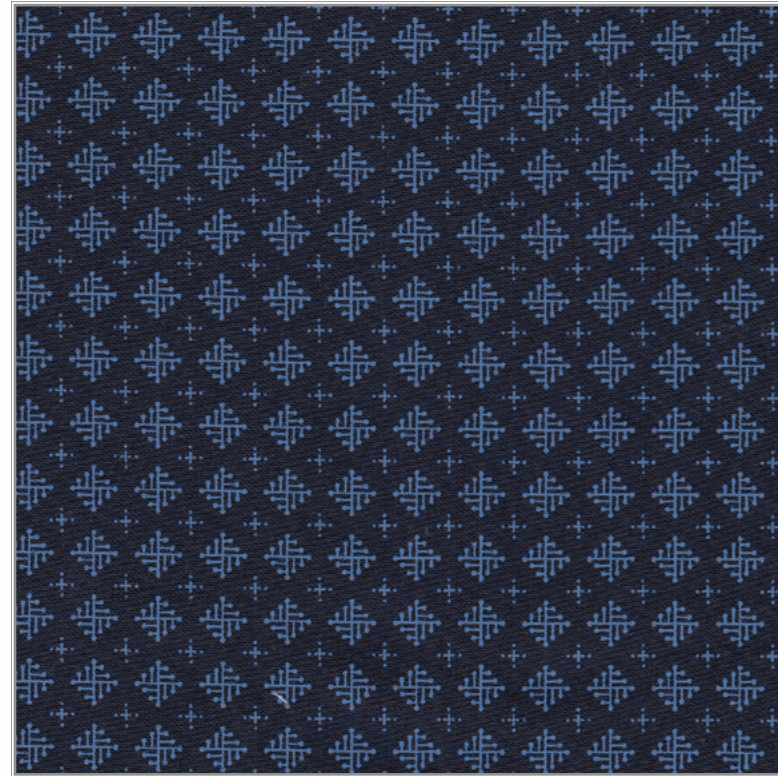
STYLE: MPL-45-19

FABRIC: 100% Cotton

DESCRIPTION: Blue print, blue snaps, and two western pockets.

MEN'S SIZES: S - 5XL TALL: LT - 5XLT

WOMEN'S SIZES: XS - 3XL



WOMEN'S STYLE



SIDE VIEW



BACK VIEW



MEN'S STYLE

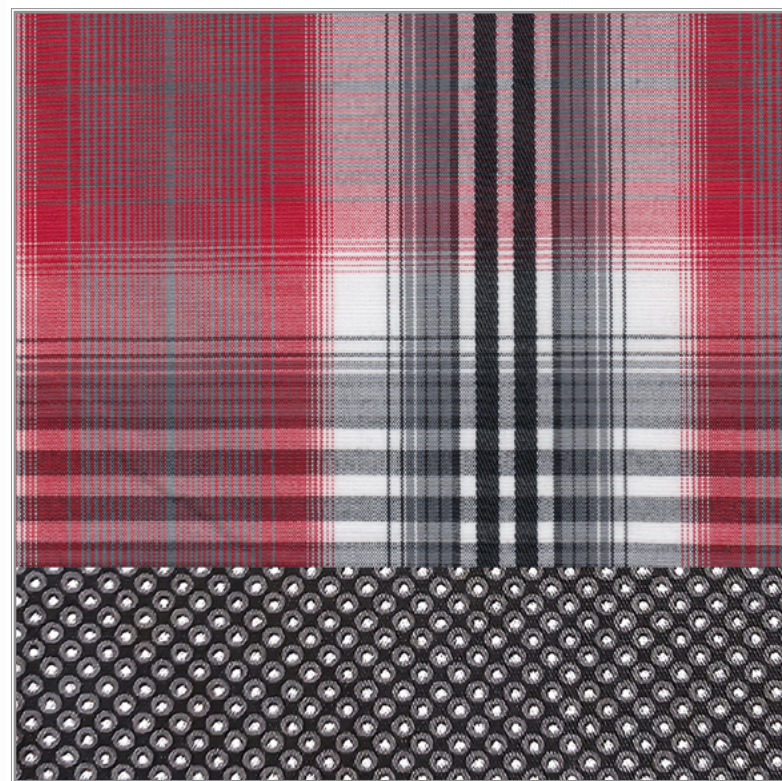
STYLE: PLAID 270

FABRIC: 55% COTTON | 45% POLYESTER

DESCRIPTION: Red plaid with contrasting fabric inside collar, placket and cuff, pearl snaps and two western pockets.

MEN'S SIZES: S - 5XL TALL: LT - 5XLT

WOMEN'S SIZES: XS-3X



WOMEN'S STYLE



SIDE VIEW



BACK VIEW



MEN'S STYLE

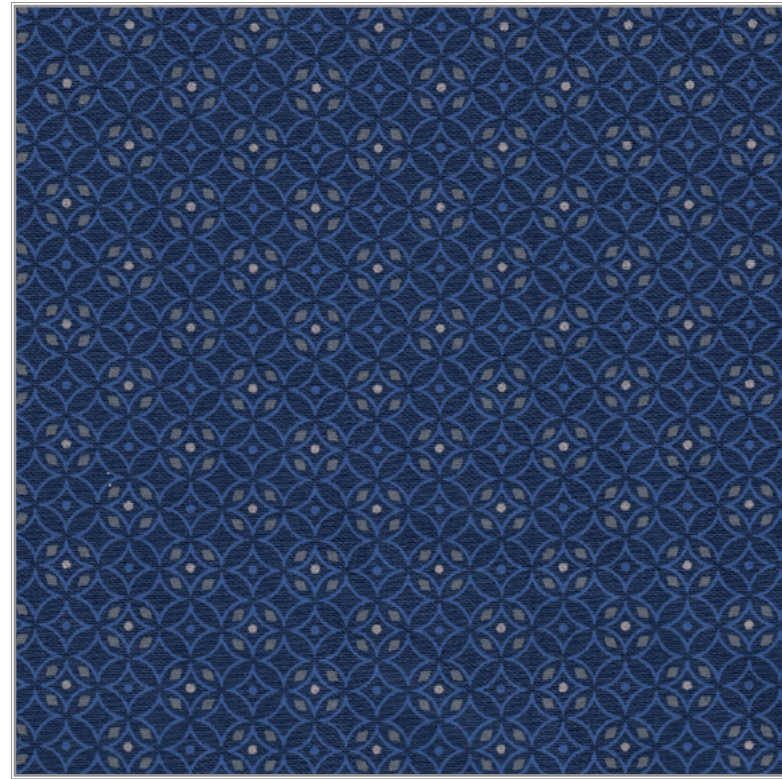
STYLE: M-PS25-501

FABRIC: 100% COTTON

DESCRIPTION: Blue print, pearl snaps, and two western pockets.

MEN'S SIZES: S - 5XL TALL: LT - 5XLT

WOMEN'S SIZES: XS-3X



WOMEN'S STYLE



SIDE VIEW



BACK VIEW



MEN'S STYLE

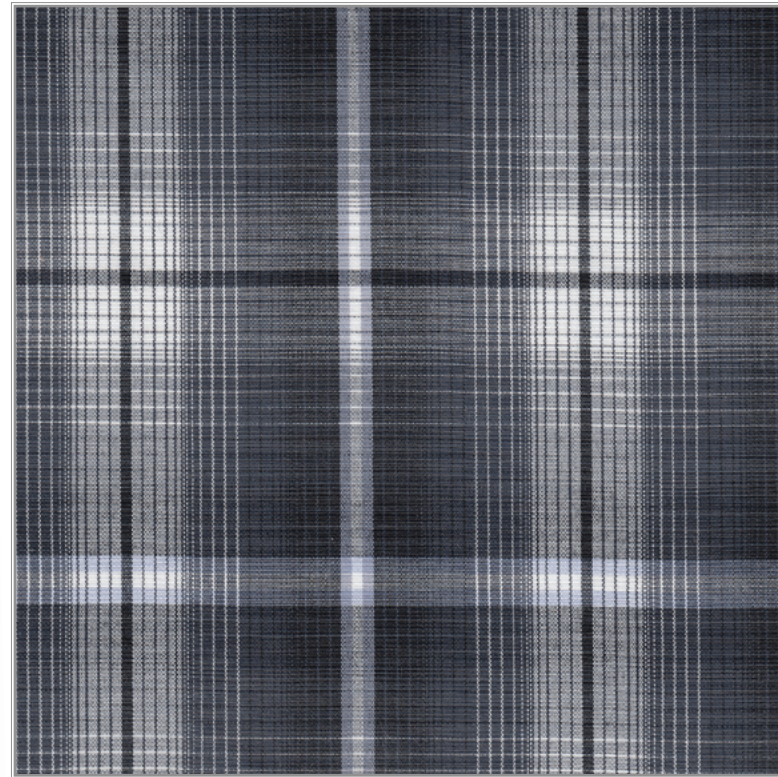
STYLE: PLAID 279

FABRIC: 55% COTTON | 45% POLYESTER

DESCRIPTION: Black/Grey paid with black snap and two western pockets.

MEN'S SIZES: S - 5XL TALL: LT - 5XLT

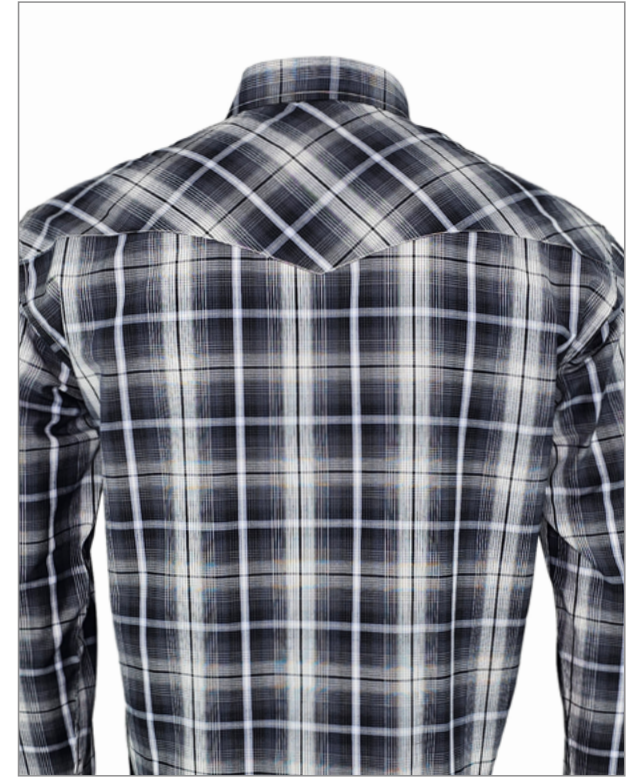
WOMEN'S SIZES: XS-3X



WOMEN'S STYLE



SIDE VIEW



BACK VIEW



MEN'S STYLE

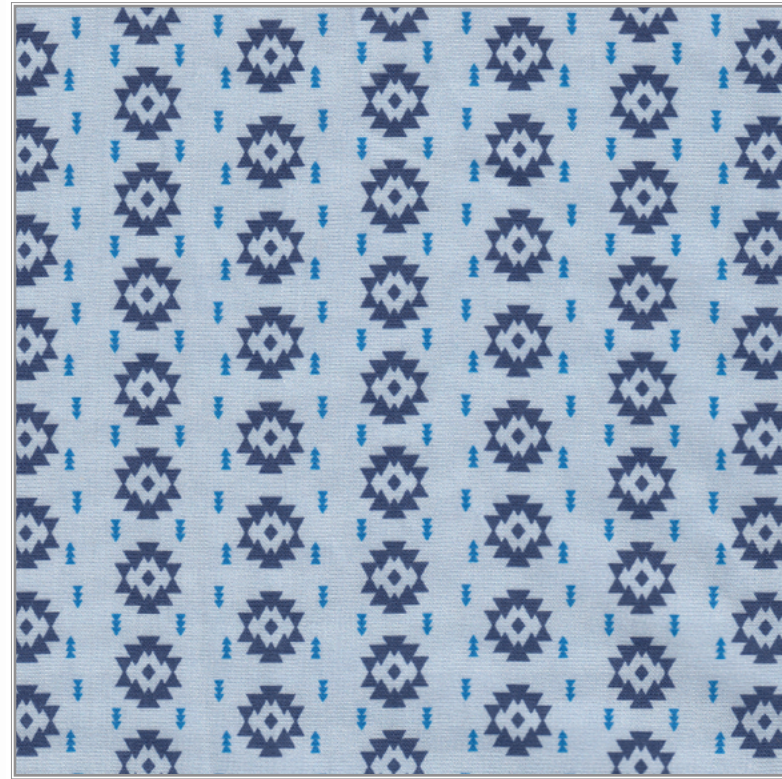
STYLE: MTB-S25-143

FABRIC: 100% COTTON

DESCRIPTION: Blue Aztec print, white snaps, and two western pockets.

MEN'S SIZES: S - 5XL TALL: LT - 5XLT

WOMEN'S SIZES: XS-3X



WOMEN'S STYLE



SIDE VIEW



BACK VIEW



MEN'S STYLE

STYLE: S-PLD-003

FABRIC: 55% COTTON | 45% POLYESTER

DESCRIPTION: Red plaid with pearl snaps and two western pockets.

MEN'S SIZES: S - 5XL TALL: LT - 5XLT

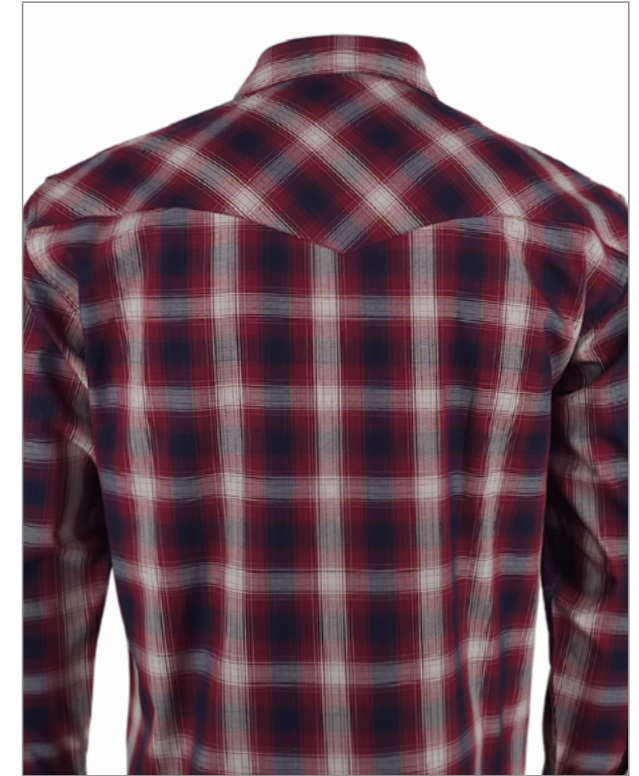
WOMEN'S SIZES: XS-3X



WOMEN'S STYLE



SIDE VIEW



BACK VIEW



MEN'S STYLE

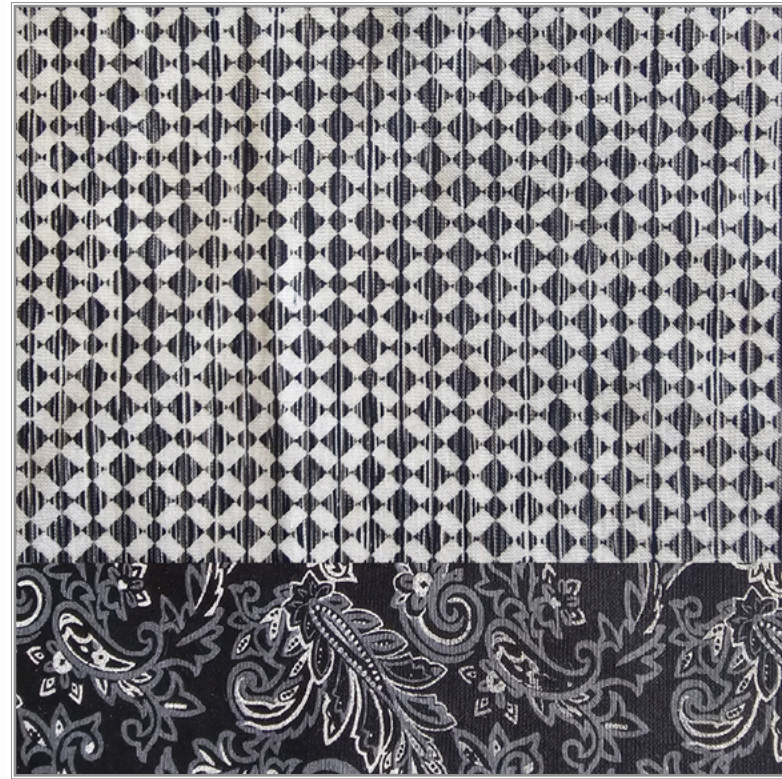
STYLE: RM5-025-003

FABRIC: 100% COTTON

DESCRIPTION: Black/white print with contrasting fabric inside collar, placket and cuff, black piping, black snap and two western pockets.

MEN'S SIZES: S - 5XL TALL: LT - 5XLT

WOMEN'S SIZES: XS-3X



WOMEN'S STYLE



SIDE VIEW



BACK VIEW



MEN'S STYLE

STYLE: PLAID 266

FABRIC: 55% COTTON | 45% POLYESTER

DESCRIPTION: Blue plaid with pearl snaps and two western pockets.

MEN'S SIZES: S - 5XL TALL: LT - 5XLT

WOMEN'S SIZES: XS-3X



WOMEN'S STYLE

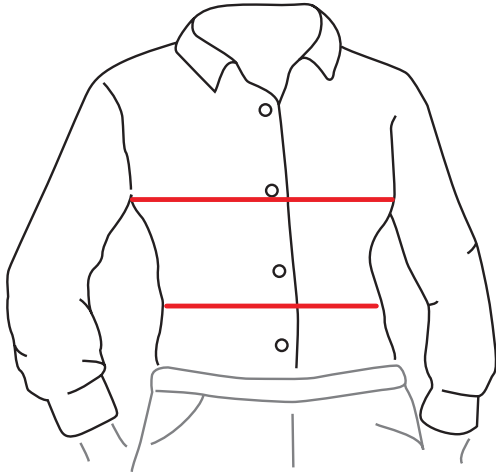


SIDE VIEW



BACK VIEW

FIT GUIDE



CHEST: Measure around the upper body, just under the arms, across the shoulder blades, while holding the tape measure firm and level.

If you don't have a measuring tape, use a piece of string and hold it alongside a ruler.

For the best fit, we suggest that you measure without clothing on.



NECK: Find a shirt with a collar that fits well. Unbutton the shirt and lay it flat, button side up. Measure from the center of the collar button to the far end of the buttonhole. Or, to measure neck instead of a shirt, place a tape measure around neck. Slip two fingers inside tape measure for a comfortable fit.

CHEST: Measure around upper body just under arms, across shoulder blades while holding tape measure firm and level.

SLEEVE LENGTH: With arm relaxed as side and slightly bent, measure from the center of the back of your neck, over point of shoulder, down the outside of the arm, to the wrist.

If you don't have a measuring tape, use a piece of string and hold it alongside a ruler.

WOMEN'S SPECIFICATIONS			
	SIZE	CHEST	WAIST
REGULAR	XS	32 - 33	28 - 29
	S	34 - 35	30 - 32½
	M	36 - 38	33 - 34½
	L	39 - 41	35 - 38½
	XL	42 - 44	39 - 41½
	XXL	44 - 46	42 - 44
BIG	3XL	46 - 48	44 - 46½
	1X	48 - 50	44 - 46
	2X	51 - 53	47 - 49
	3X	54 - 56	50 - 52

MEN'S SPECIFICATIONS				
	SIZE	NECK	CHEST	SLEEVE
REGULAR	S	14 - 14½	34 - 37	32½ - 33
	M	15 - 15½	38 - 41	33½ - 34
	L	16 - 16½	42 - 45	34½ - 35
	XL	17 - 17½	46 - 49	35½ - 36
	XXL	18 - 18½	50 - 53	35½ - 36
BIG	3XL	19 - 19½	56 - 58	35½ - 36
	4XL	20 - 20½	59 - 62	35½ - 36
	5XL	21½ - 22	63 - 66	36 - 37
TALL	LT	16 - 16½	42 - 45	36½ - 37
	XLT	17 - 17½	46 - 49	36½ - 37
	2XLT	18 - 18½	50 - 53	37½ - 38
	3XLT	19 - 19½	54 - 57	37½ - 38
	4XLT	20 - 20½	59 - 62	37½ - 38
	5XLT	21½ - 22	63 - 66	37½ - 38



RILEY & MCCORMICK

WESTERN WEAR

Thank you for stopping by! We hope you have enjoyed the selection of western wear we have to offer. If you have any questions about any of these products or are looking for something specific, please contact your sales rep and they would be happy to answer any questions you may have!

